

## DISOWARE® S

The state-of-the-art software solution



- Modern standardised operator environment
- Major data security by using a SQL database server
- Integrated loading control
- Integrated cashbox management
- Convenient invoicing function
- Sophisticated data exchange options with other software systems
- Customization possible
- Network-compatible

### Application:

DISOWARE® S is a weighing and data processing program for:

- Truck scales
- Rail weighbridges
- Crane scales
- Load out scales

in trade, transport and commerce.

It covers most scale requirements.

### Structure

DISOWARE S consists of the following main components

- Scale operation window
- Weighing cashbox
- Master data and dynamic data administration
- Data analysis
- Service functions

This program's special features are:

- Standardised operator environment under MS Windows
- Recording inbound and outbound deliveries with weight, quantity or sales figures
- Weighing without operator interference via identification systems such as card readers
- Remark texts for operators or drivers of different sorts carriers, receivers, customers and vehicles

- Online help system
- Program-assisted flexible pricing with minimum prices and special price factors
- Non-redundant master data administration
- Maximum data security and consistency due to transaction processing via the SQL database
- Extensive backup and archiving functions
- Multilingual user interface
- Driver self-service via touch monitor
- Load out scales
- Program and components configured by structured setup guidance.

The individual components of the program are described below.

### Scale window

The scale window shows the current weight on the scales and provides complete scale operation via PC.

Basic functions of the scale control system:

- Taring
- Clearing tare memory
- Zero setting
- Displaying tare
- Displaying gross
- Switching the weighbridges for weighing with selectability
- Dosing.

### Weighing

Weighing has been optimised for particularly fast vehicle processing.

All weighing modes are carried out in the same window.

Along with the normal weighing modes:

- First/second weighing
- Single weighing
- Fixed tare weighing
- External weighing

there are other very user-friendly weighing function available including:

- Weighing via ID number
- Repeated weighing (You can call up the last weighing data record directly via the motor vehicle number)
- Load-out weighing.

Record and calculate the weight, sales figure or volume depending upon the sort.

Remark texts for certain sorts, carriers, receivers, customers and vehicles can be overlaid.

The cashbox is automatically called up for cash payment.

### Master data and dynamic data administration

Master data and dynamic data are processed in spread-sheets or forms. Input forms allow easy processing.

Along with keying in, changing, clearing and printing out master data stocks, you can also easily select certain master data records according to a variety of criteria.

The following master data tables have been set up:

- Customers
- Carriers
- Receivers
- Addresses
- Sorts
- Special prices
- Vehicles
- ID numbers
- Remark texts.

The system automatically generates dynamic data. You can follow up on or cancel delivery notes.

Each user is stored for cancellations of data sets along with a cancellation text.

### Data analysis

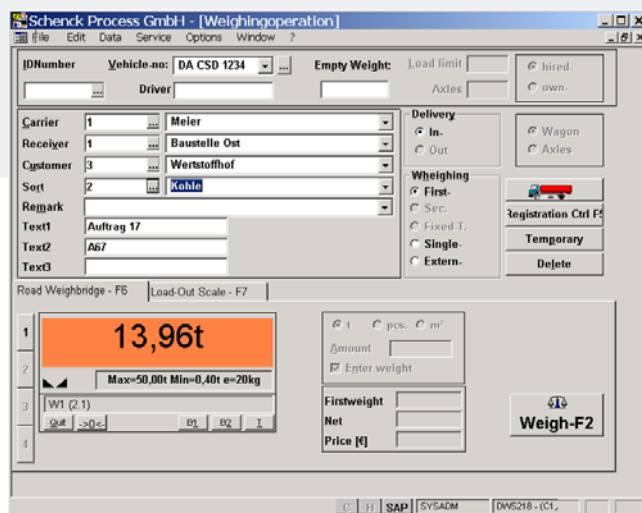
The following Reports are prepared and available and they can be extended at any time.

- Daily statistics
- Yard table
- Statistics for one customer or material, etc.
- Sort sums over time
- Customer sort sums
- Carrier sort sums
- Receiver sort sums

### Service functions

This includes the organisation data and functions for backup and archiving.

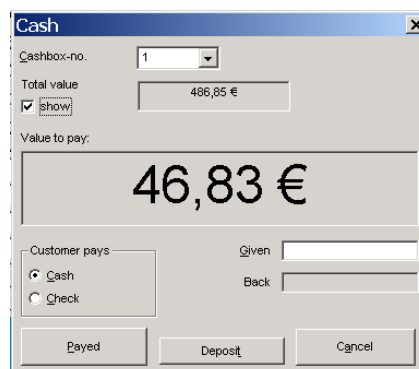
The organisation data available are value-added tax rates, external-weighing charges, operator data, headers and footers and data for installation configuration.



### Cashbox

You can administer several cashboxes in the system.

You can close the cashbox at any time.



In increasingly complex data processing systems, data security is becoming more and more important. DISOWARE S allows you to conveniently create back-ups of data stocks or export them for long-term storage (archiving). Data can be filed on various media types.

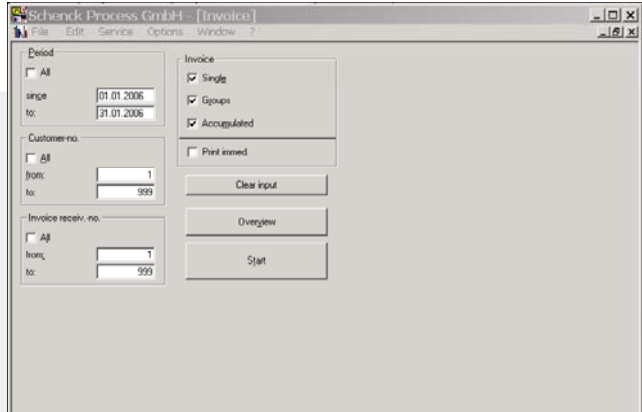
### Option: Invoicing

Delivery notes are used to make:

- Single invoices
- Accumulated invoices (all weighing processes of one customer grouped according to receivers)
- Group invoices (a separate invoice is drawn up for each group of receivers like an accumulated invoice)

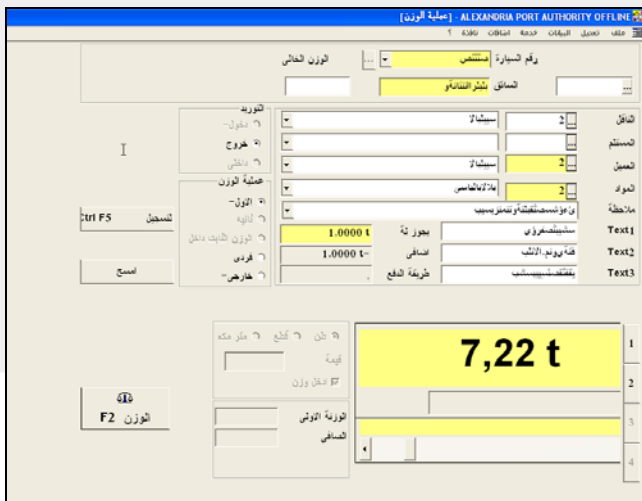
depending on specifications in the customer master data.

The invoicing period, clientele and group of receivers can be defined ahead of time.



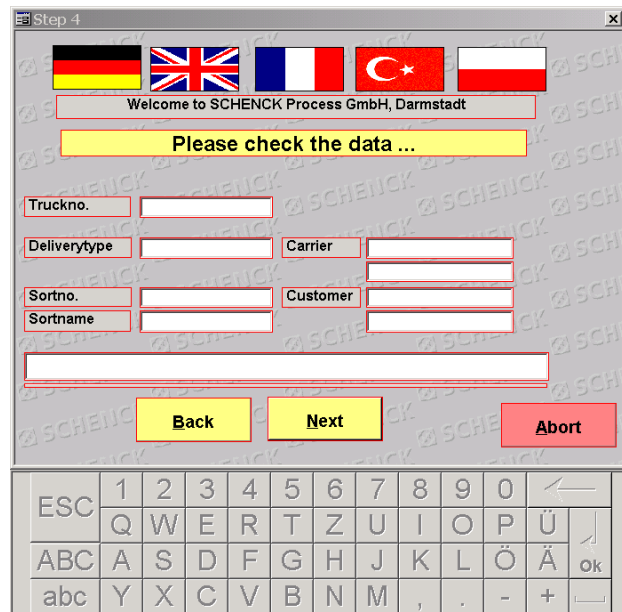
### Multilingual user interface

You can change the language of the user interface, menus and database, such as English, French, Portuguese, Dutch, Hungarian and Arabic



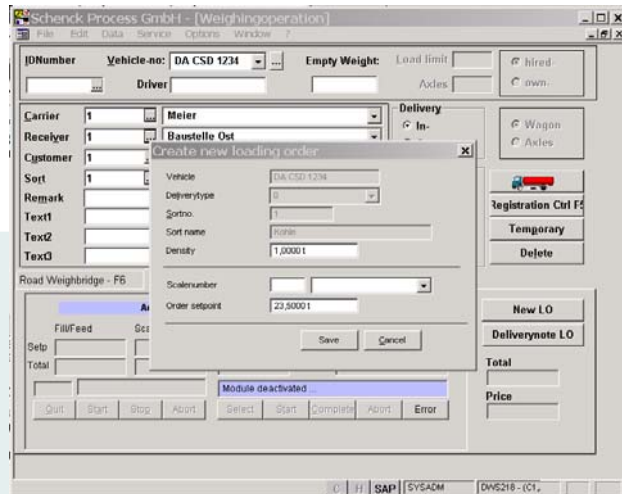
### Driver self-service:

Configurable user interface for convenient scale operation via touch monitor. You can change the user's language by touching the corresponding flag.



### Load out scale:

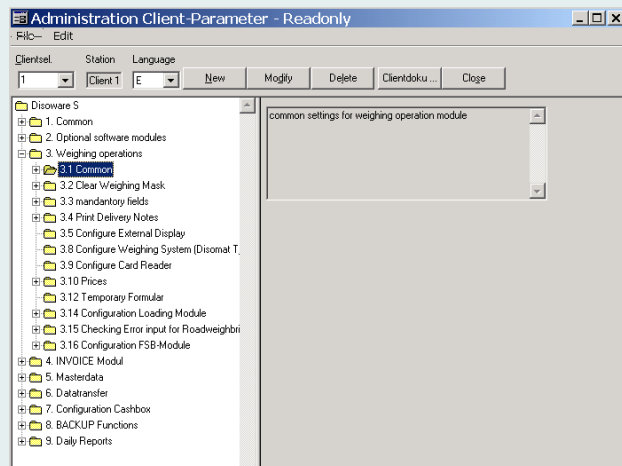
DISOWARE S enables you to control one or several load out scales (option). You can key in setpoints and control start, stop and cancel load-out.



### Configuration and Service:

You can adapt and adjust all parameters via clearly structured menus.

- Print-outs can be adapted with report generator
- You can configure all parts of the program such as masks, data, export and import
- You can configure the scales, card readers and other connected peripherals



### The basic design

PC single user:

- Weighing PC
- The DISOWARE S application program
- The DISOPRINT delivery note printer
- Operating Manual

**Order number D723030.01**

Option Invoicing

**Order number D723030.02**

**Schenck Process GmbH**  
Pallaswiesenstr. 100  
64293 Darmstadt, Germany  
T +49 6151 32-1216  
F +49 6151 32-1172  
transport@schenckprocess.com  
www.schenckprocess.com